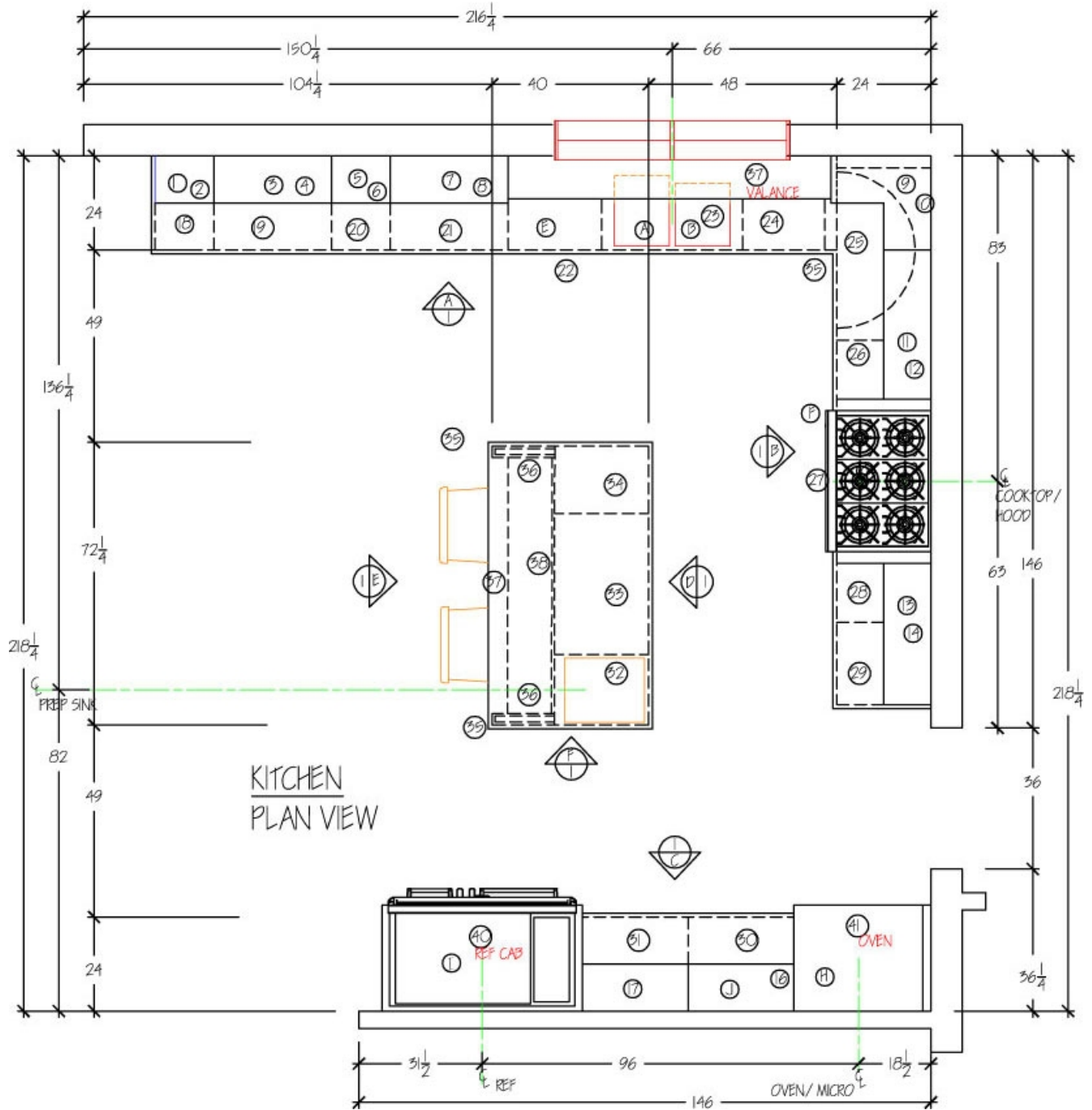
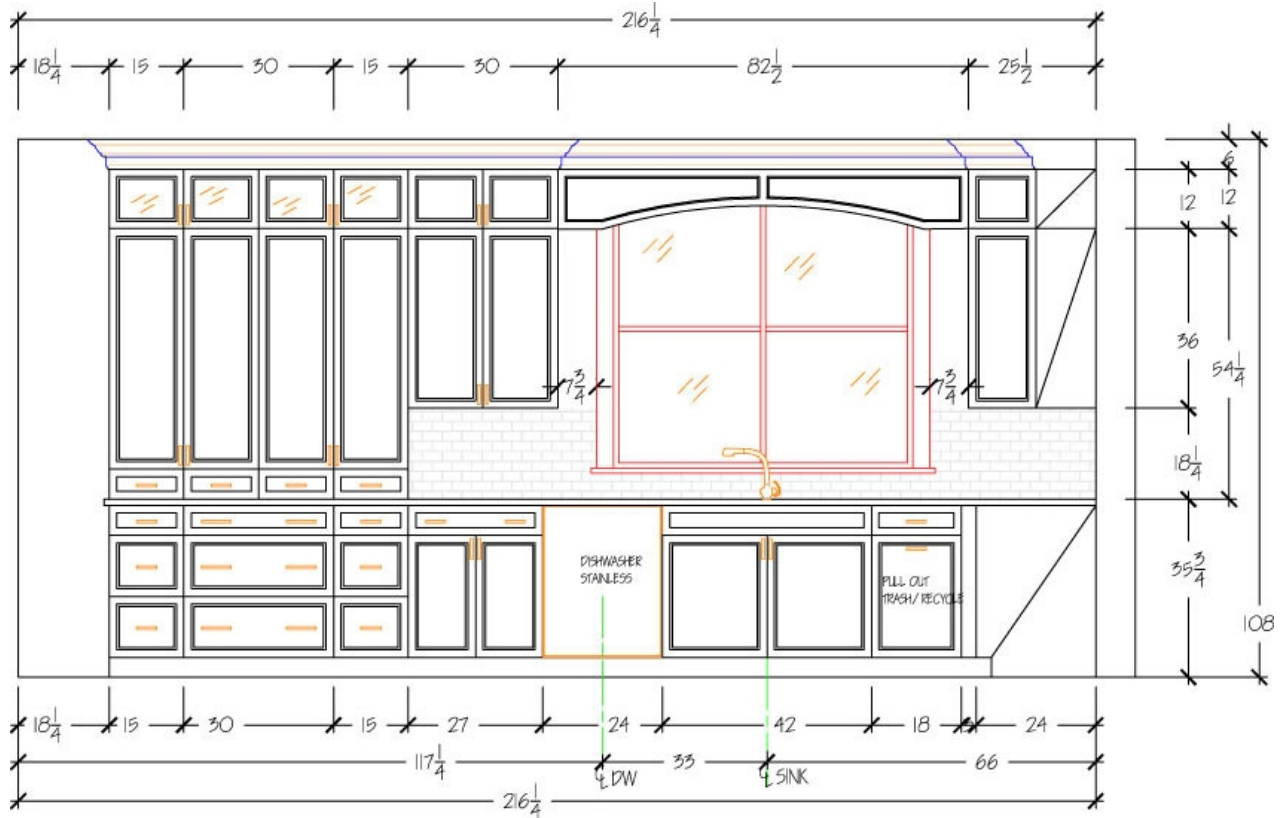
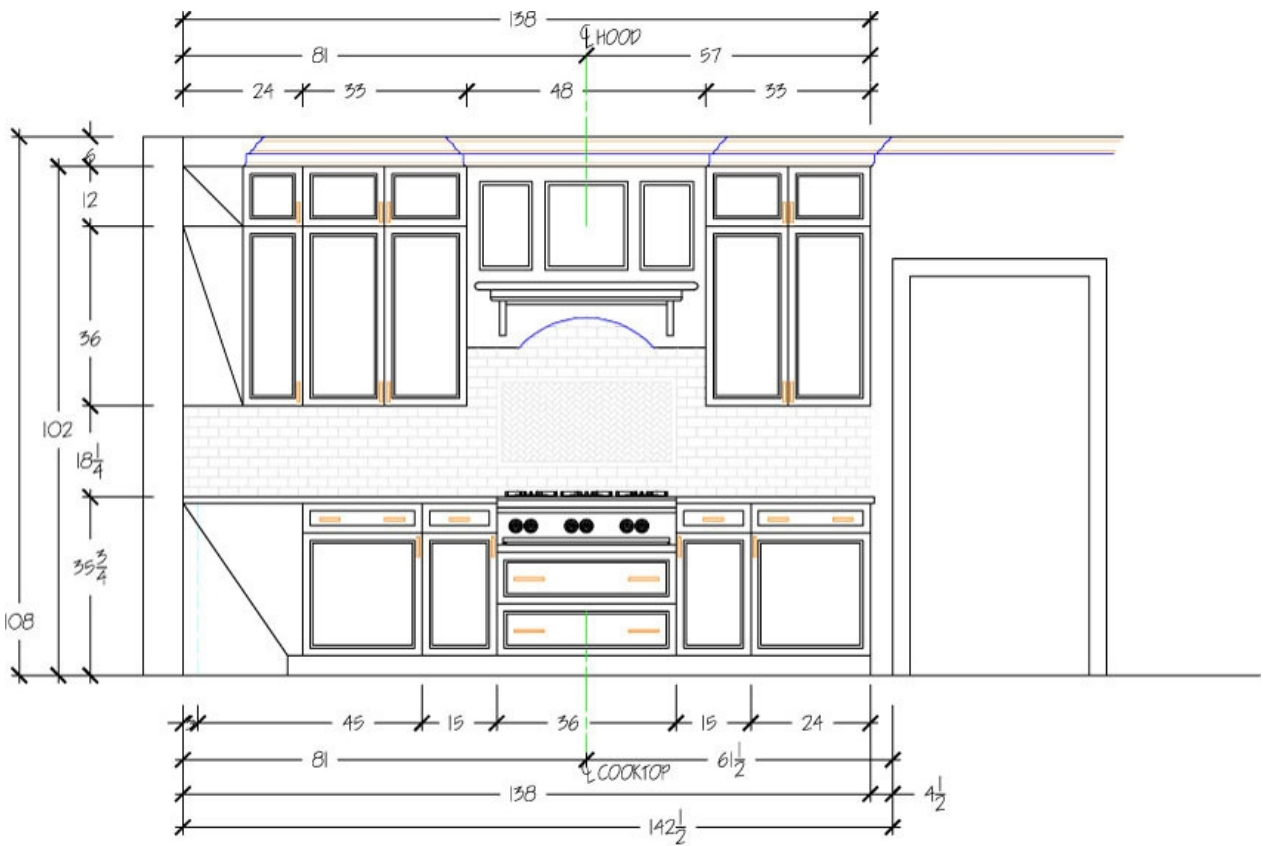


# GOLD SERIES

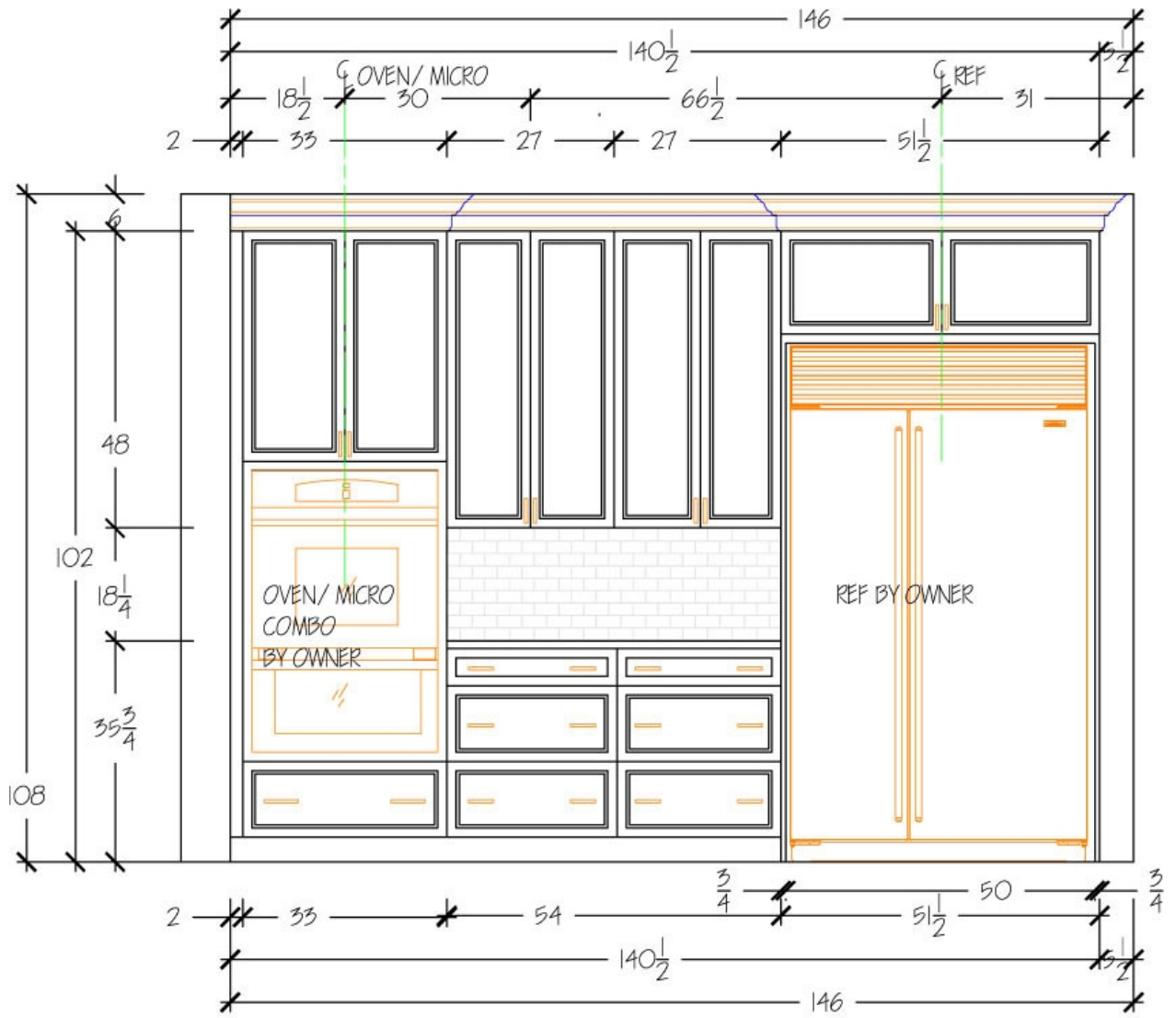




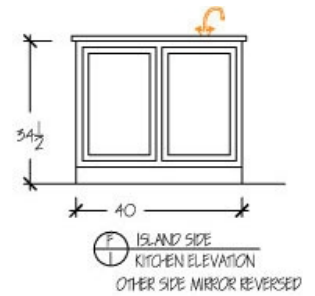
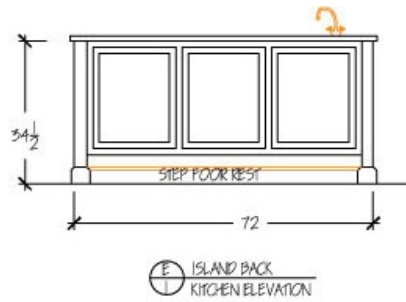
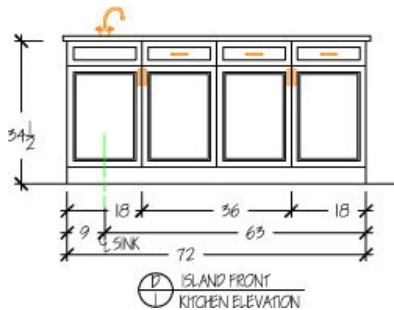
(A) KITCHEN ELEVATION  
 SCALE:  $1/2'' = 1'-0''$

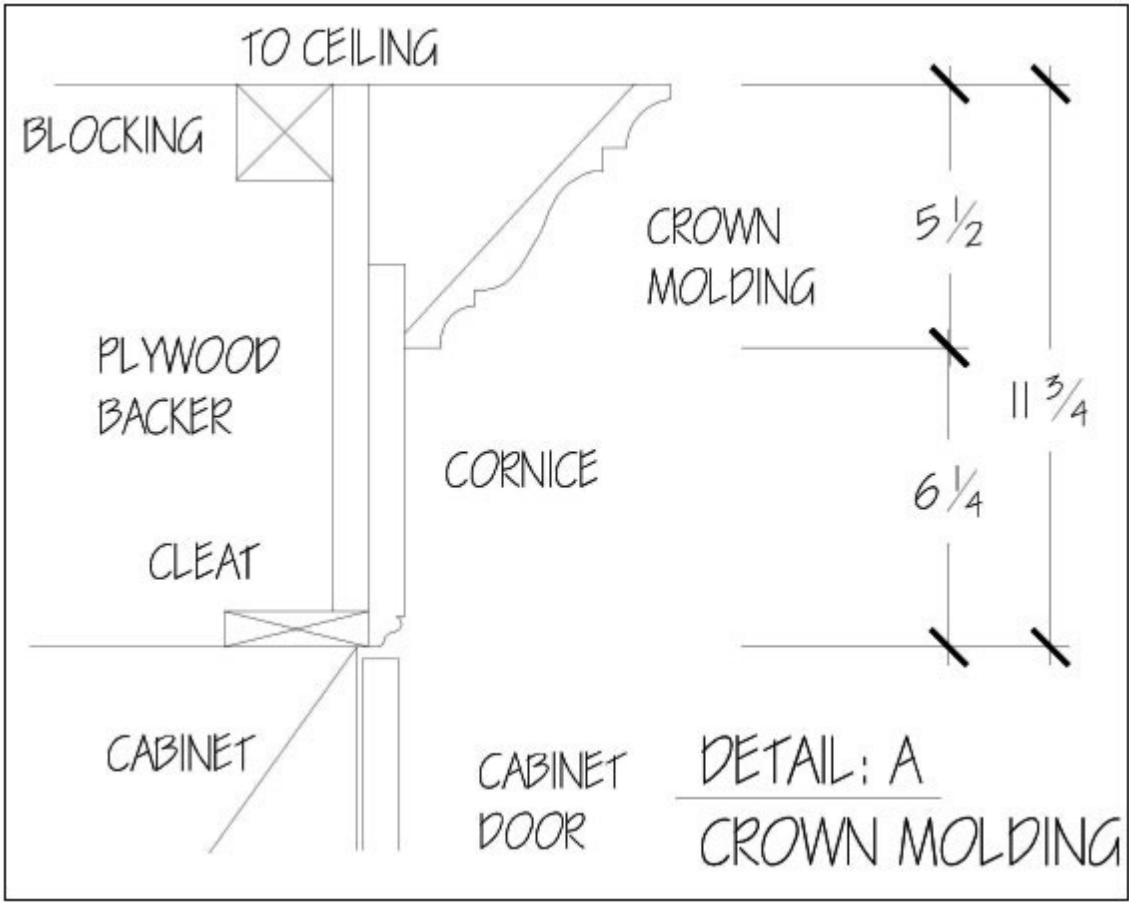


(B) KITCHEN ELEVATION  
 SCALE:  $1/2'' = 1'-0''$



C KITCHEN ELEVATION  
 SCALE: 1/2" = 1'-0"

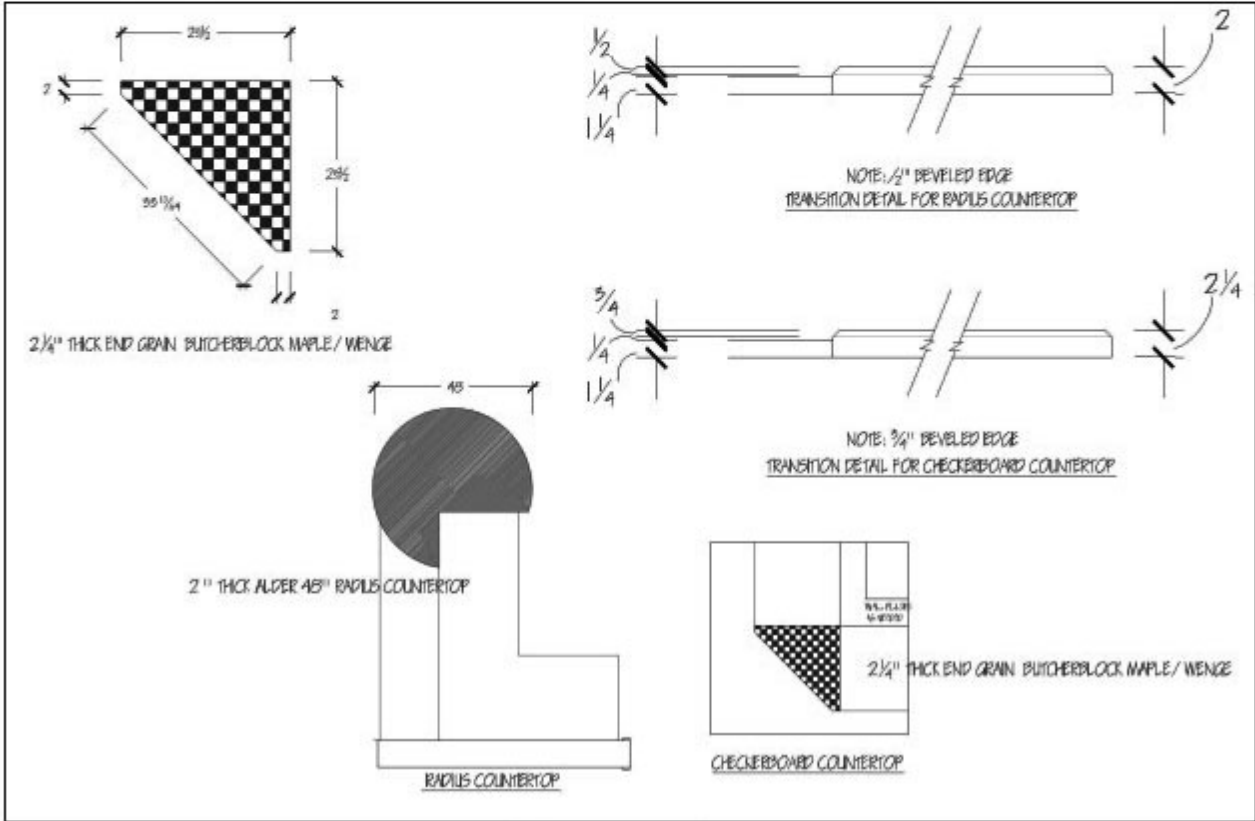




# COUNTERTOP DETAILS



## LAYERED COUNTERTOP DESIGN



# Floor Plan Specifications

## JOB:

### Plumbing Schedule

- A. MAIN FAUCET: DORNBRACHT ELIO
- B. MAIN SINK: FRANKE #VNX-120-37
- C. PREP FAUCET: DORNBRACHT ELIO
- D. PREP SINK: FRANKE #USASK900-18

### Appliance Schedule



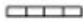

- E. DISH WASHER: KITCHENAID #KUDS03FTSS
- F. COOK TOP: DF364G-LP
- G. HOOD LINER: WOLF #801642, REMOTE1200CFM
- H. SINGLE OVENS: WOLF #SO30-2U/S
- I. REFRIGERATOR: SUB ZERO #BI-48SD/S/CH
- J. MICROWAVE: WOLF #MWC24 W/TRIM

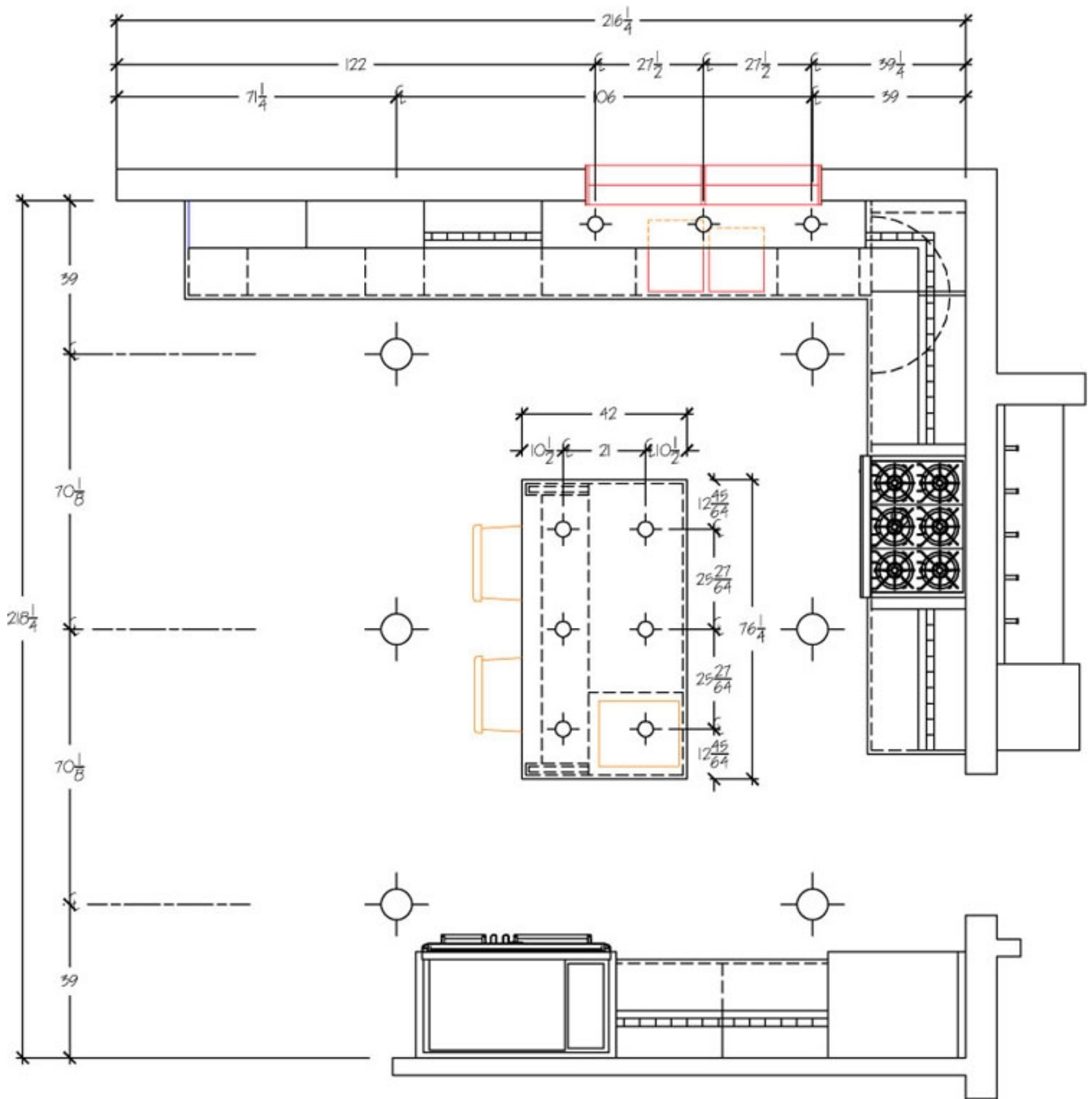
### Floor Plan Specification

- 1. W1512, COMBINE W/ITEM #2, FINISH SIDE -L, HINGE-L, FRAME FOR GLASS, MATCHING INTERIOR
- 2. W1554-1/4, COMBINE W/ ITEM #1, FINISH SIDE-L, HINGE-L, ADD DRAWER
- 3. W3015, COMBINE W/ITEM #1, 4,5, FRAME FOR GLASS, MATCHING INTERIOR
- 4. W3054-1/4, COMBINE W/ITEM #2,3,6, ADD (2) DRAWERS
- 5. W1512, COMBINE W/ ITEM #3,6, HINGE-R, FRAME FOR GLASS, MATCHING INTERIOR
- 6. W1554-1/4, COMBINE W/ITEM #4,5, FINISH SIDE-R, HINGE-R, ADD DRAWER
- 7. W3015, COMBINE W/#8, FINISH SIDE-R
- 8. MATCHING ARCHED VALANCE 82-1/212 (INSTALLED SET BACK-2INCHES TO OFF SET MOLDINGS)
- 9. WC25-1/22412, COMBINE W/ITEM #10, FINISH END-L, HINGE-R
- 10. WC25-1/22436, COMBINE W/ITEM #9 FINISH END-L, HINGE-R
- 11. W3312, COMBINE W/ITEM#12
- 12. W3336, COMBINE W/ITEM#11, FINISH END-R
- 13. CUSTOM HOOD4836-24
- 14. W3312, COMBINE W/#14, FINISH END-R
- 15. W3336, COMBINE W/#13, FINISH END-R
- 16. WMC2748 (MICROWAVE CABINET)
- 17. W2748
- 18. B3D15, FINISH END-L
- 19. B3D30
- 20. B3D15
- 21. B27, FINISH END-R
- 22. MATCHING DISH WASHER PANEL

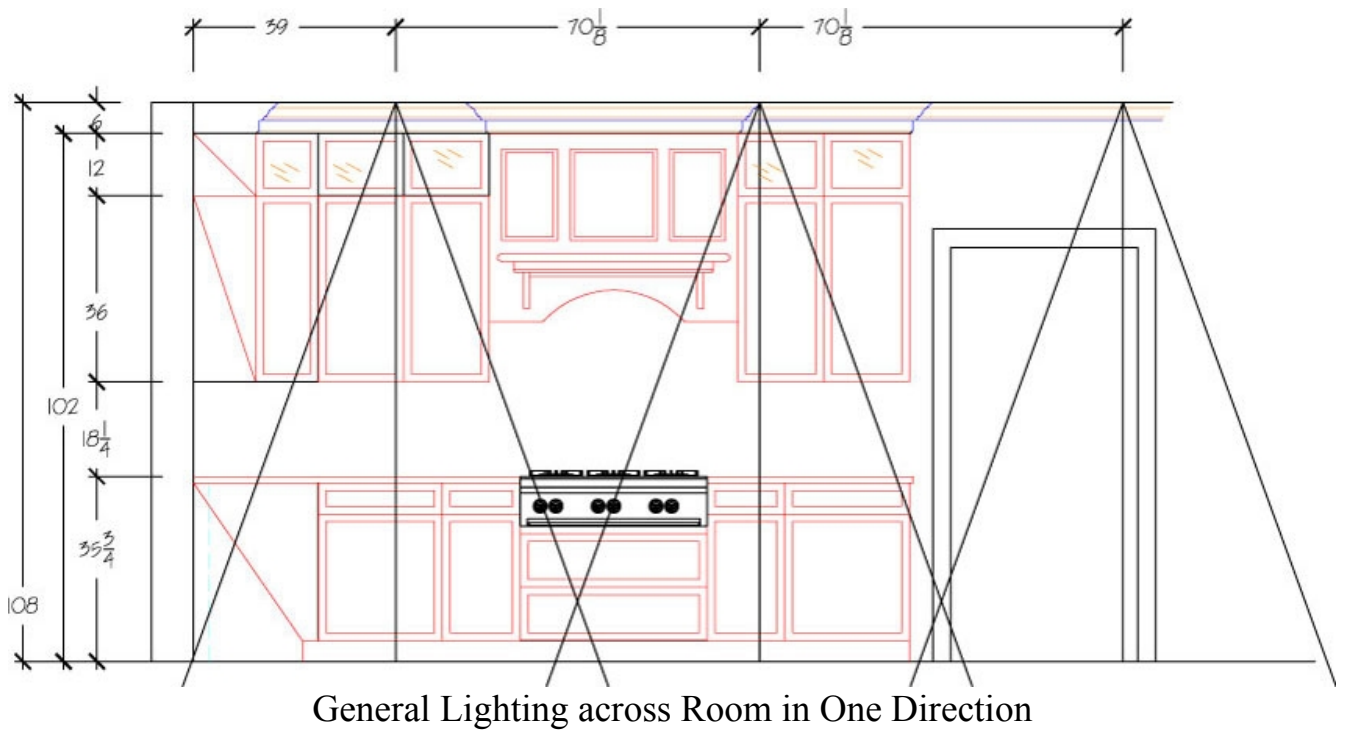
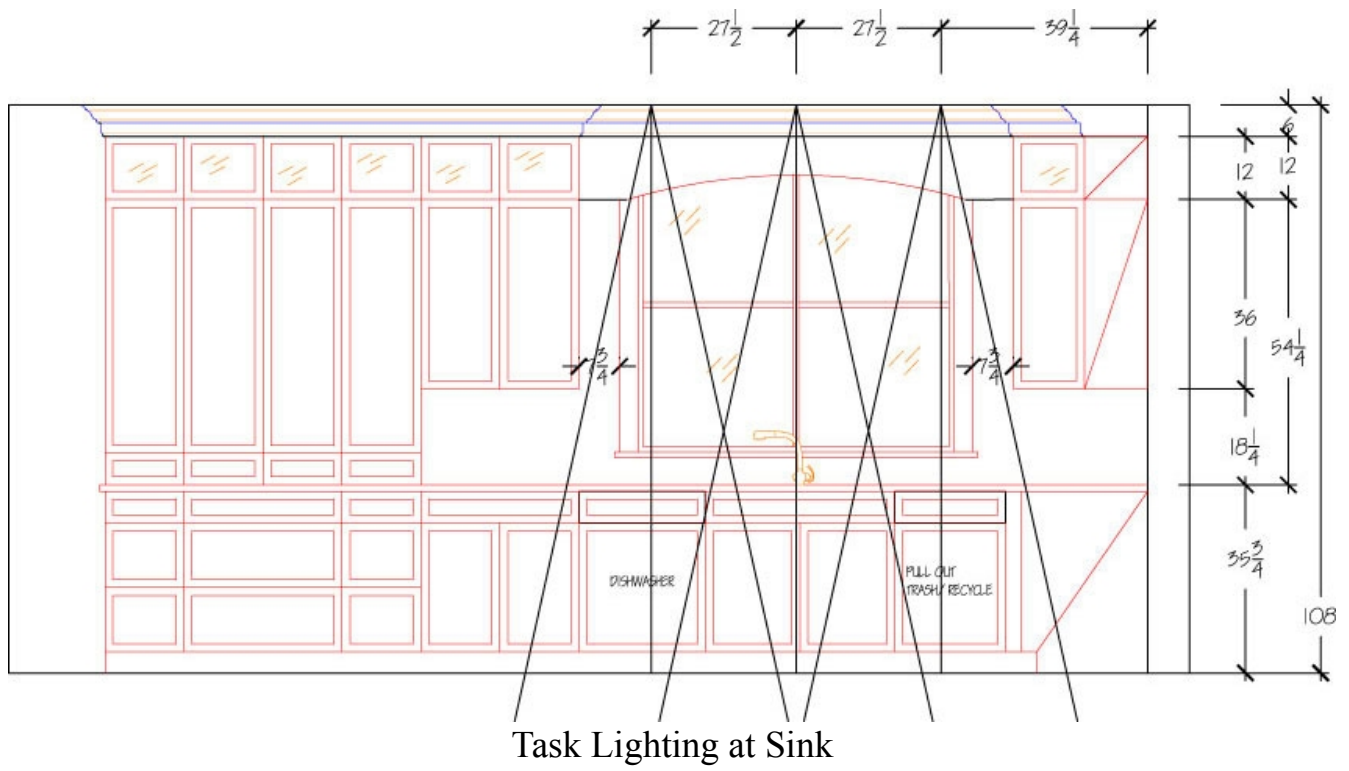
23. SB42, FINISH END-R
24. B18, (RECYCLE TRASH)
25. BBCT45 (BLIND CORNER TURNOUT TO BE PULLED 3-INCHES OFF WALL), HINGE-L
26. B15, FINISH END-R
27. B2D36(POT AND PAN DRAWERS), FLUSH FINISHED TOP, REDUCE HEIGHT TO ACCOMMODATE COOKTOP
28. B15, FINISH END-L
29. B24, FINISH END-R
30. BD327
31. BD327
32. SB18, EXTEND SIDE BACK 15-INCHES, INTEGRAL MATCHING SIDE-L
33. B36
34. B18, EXTEND SIDE BACK 15-INCHES, INTEGRAL MATCHING SIDE-R
35. (3)BF3
36. (2)BEP
37. CUT TO SIZE PANEL FOR FOOT REST AT ISLAND 60 X 24
38. WAINSCOT BACK PANEL 60 X 30 (ISLAND BACK)
39. DO33102, FINISH SIDE-R
40. REFRIGERATOR CABINET 51-1/2 X 102 X 26DEEP, FINISH ENDS-LR
41. TF3102
42. CORNICE (8-8FT.-PC.)
43. CROWN (8-8FT.-PC.)
44. FURNITURE BASE AT ISLAND (3-8FT.PC.)
45. TOE KICK (8-8FT.-PC.)

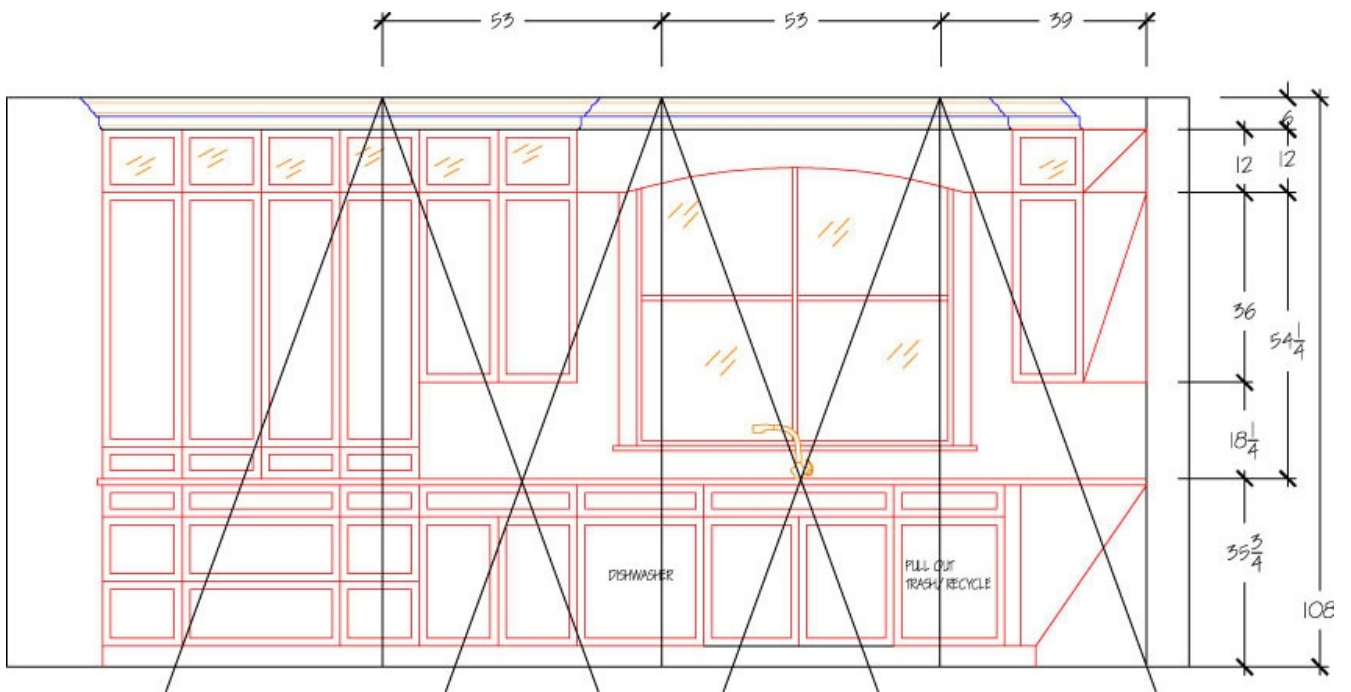
## Lighting Design

Lighting Legend			
Pictures	Fixtures	Trim	Lamp
	Halo H51CAT	Halo 500IP	Sylvania 50PAR30/HAL/FL40
	Halo H1499IC	Halo 1419P	Sylvania 35MR16/T/NFL25/C
	Clickstrips by Ardee	To be placed as far forward as possible to illuminate the backsplash	Frosted white Xenon Festoons
	Switches with dimmers		

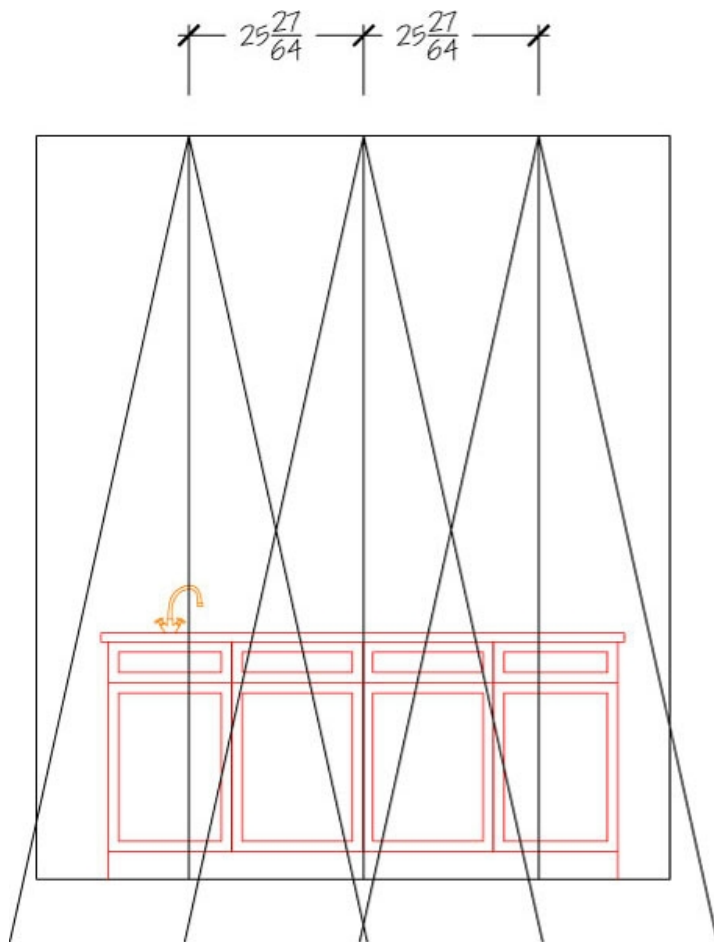


Lighting Plan View

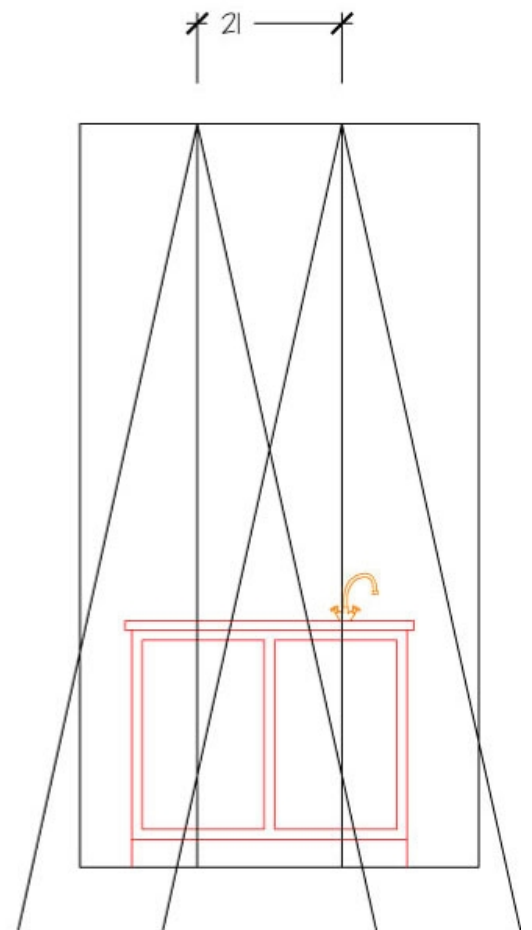




General Lighting across Room in One Direction



Task Lighting Front and Back of Island



Task Lighting at Side of Island

# SCOPE OF WORK

October 20, 2009

## **JOB:**

### **GENERAL CONTRACTOR**

PULL PERMIT ON PROJECT.

RENT DUMPSTER OR HAUL TRASH AT END OF DAY.

KEEP PROJECT CLEAN DAILY.

CLOSE OFF AREA UNDER CONSTRUCTION USING ZIPPERED VISQUEEN AT ALL OPENINGS.

CLOSE OFF ALL AIR VENTS FROM CONSTRUCTION AREA TO KEEP CONSTRUCTION DUST AT MINIMUM.

DEMO EXISTING: CABINETS, COUNTERTOPS AND DRYWALL CEILING AT KITCHEN ONLY. I FEEL IT WILL BE BETTER THAN TRYING TO PATCH CEILING FOR NEW LIGHTING PLAN. NO SEAM FROM NEW CONSTRUCTION TO ADJACENT ROOM.

REINSTALL DRYWALL AT CEILING AFTER ELECTRICIAN HAS INSTALLED NEW FIXTURES.

REMOVE WALL AT NE CORNER OF STORAGE ROOM AND REBUILD PER PDB'S PLANS.

REMOVE EXISTING KNEE WALL AT EXISTING ISLAND.

BUILD WALL NICHE AT NEW HEARTH LOCATION PER PDB'S PLAN.

BUILD KNEE WALL AT NORTH ISLAND PER PDB'S PLAN.

ADD DRYWALL WHERE NECESSARY.

PAINT BY BENJAMIN MOORE REGAL SERIES

CONCRETE WORK TO CUT CONCRETE FOR PLUMBING & ELECTRIC

RE-WORKING THE CENTRAL VAC

## **PLUMBER**

PULL PERMIT.

RUN WATER PIPES FOR POT FILLER IN CEILING AFTER DEMO

CAP OFF EXISTING PLUMBING BEFORE DEMO.

RELOCATE DISH WASHER PER PDB'S PLAN.

ADD SINK AT NEW ISLAND PER PDB'S PLAN.

ADD POT FILLER AT HEARTH.

INSTALL ALL NEW SINKS AND FAUCETS.

RECAP ALL PLUMBING AFTER COMPLETION OF PROJECT.

## **ELECTRICIAN**

PULL PERMIT.

INSTALL ALL NEW FIXTURES PER PDB'S PLAN.

INSTALL LOWVOLTAGE UNDER CABINET LIGHTING.

SUPPLY AND INSTALL ALL SWITCHES TO BE DIMMERS.

PDB WILL SUPPLY ALL FIXTURES AND LAMPS.

INSTALL ALL LAMPS PER PDB'S LEGEND. ANY VARIATION TO LEGEND WILL RESULT IN THE LIGHTING DESIGN NOT WORKING PER MEASURED BEAM SPREADS AND CANDLEPOWERS.

WIRE MESSAGE CENTER FOR TELEPHONE, COMPUTER AND FAX.

DISH WASHER WILL BE MOVING TO THE LEFT SIDE OF THE SINK PER PDB'S PLANS.

ADD ELECTRIC FOR NEW RECIRCULATING HOOD AT HEARTH LOCATION.

ADD WIRING FOR NEW TV AT HEARTH WALL PER PDB'S PLAN.

RELOCATE THE MICROWAVE PER PDB'S PLAN.

(2) SPEAKERS IN CEILING NEED TO BE MOVED TO CLEAR CABINetry.

ELECTRICAL PANEL WILL NEED TO BE CHECKED.

## **HVAC**

RELOCATE HVAC REGISTERS AT HEARTH WALL TO PROPER LOCATIONS AND TO NOT INTERFERE WITH DESIGN OF CABINETS GOING TO CEILING.

## **WOOD FLOORING CONTRACTOR**

COORDINATE WITH PLUMBER THE REMOVAL OF THE WOOD FLOORING TO RUN NEW PLUMBING LINES TO NEW ISLAND FOR PREP SINK.

NEW FLOORING WILL NEED TO BE ADDED WHERE OLD ISLAND WAS REMOVED AND NEW ISLANDS WERE ADDED.

NEW FLOORING WILL NEED TO BE ADDED AND NEW MESSAGE CENTER.

SEAMLESSLY PATCH WOOD FLOORING WHERE NEEDED TO COMPLETE THE PROJECT.

## **TILE INSTALLER**

INSTALL TUMBLED MARBLE BACKSPLASH PER PDB'S PLAN.

## **COUNTERTOP INSTALLER**

THERE SHOULD ONLY BE ONE SEAM AT SINK CUTOUT. THERE WILL BE ½ OVER HANG FROM CABINET DOOR & DRAWER FRONTS.

COUNTER TOP AT SEATING AREA WILL BE TEMPLATED AND APPROVED BY PDB FINE CABINETRY.

# Color Board



## FINISHES KEY

ITEM	CONTENTS
1	CABINETS - DUTCHMADE - FLORENTINE - DISTRESSED - ANTIQUE WHITE PAINT
2	BACKSPLASH TILE - ARTISTIC TILE # MTSDC4
3	COUNTERTOP - CAESARSTONE #4350 LAGOS BLUE
4	ISLAND COUNTERTOP - PurLave - #RIOI BURNT RED
5	NICHE FOCAL POINT TILE - ENCORE #TXCB01
6	FLOOR - 5/8" GLUEDOWN - HANDSCRAPED - WALNUT - 5" PLANKS
7	FABRIC - T BAHAMA - TROPICAL SUNRISE